

Anti-LTBR Antibody
Catalog # ABO11276**Specification**

Anti-LTBR Antibody - Product Information

Application	WB, IHC-P
Primary Accession	P36941
Host	Rabbit
Reactivity	Human
Clonality	Polyclonal
Format	Lyophilized

Description

Rabbit IgG polyclonal antibody for Tumor necrosis factor receptor superfamily member 3(LTBR) detection. Tested with WB, IHC-P in Human.

Reconstitution

Add 0.2ml of distilled water will yield a concentration of 500ug/ml.

Anti-LTBR Antibody - Additional Information

Gene ID 4055

Other Names

Tumor necrosis factor receptor superfamily member 3, Lymphotoxin-beta receptor, Tumor necrosis factor C receptor, Tumor necrosis factor receptor 2-related protein, Tumor necrosis factor receptor type III, TNF-RIII, TNFR-III, LTBR, D12S370, TNFCR, TNFR3, TNFRSF3

Calculated MW

46709 MW KDa

Application Details

Immunohistochemistry(Paraffin-embedded Section), 0.5-1 µg/ml, Human, By Heat
Western blot, 0.1-0.5 µg/ml, Human

Subcellular Localization

Membrane; Single-pass type I membrane protein.

Protein Name

Tumor necrosis factor receptor superfamily member 3

Contents

Each vial contains 5mg BSA, 0.9mg NaCl, 0.2mg Na₂HPO₄, 0.05mg Thimerosal, 0.05mg NaN₃.

Immunogen

A synthetic peptide corresponding to a sequence at the C-terminus of human LTBR(420-435aa ATPSNRGPRNQFITHD).

Purification

Immunogen affinity purified.

Cross Reactivity

No cross reactivity with other proteins

Storage

At -20°C for one year. After reconstitution, at 4°C for one month. It can also be aliquotted and stored frozen at -20°C for a longer time. Avoid repeated freezing and thawing.

Anti-LTBR Antibody - Protein Information

Name LTBR

Synonyms D12S370, TNFCR, TNFR3, TNFRSF3

Function

Receptor for the heterotrimeric lymphotoxin containing LTA and LTB, and for TNFS14/LIGHT (PubMed: [24248355](http://www.uniprot.org/citations/24248355)). Activates NF-kappa-B signaling pathway upon stimulation with lymphotoxin (LTA(1)-LTB(2)) (PubMed: [24248355](http://www.uniprot.org/citations/24248355)). Promotes apoptosis via TRAF3 and TRAF5. May play a role in the development of lymphoid organs.

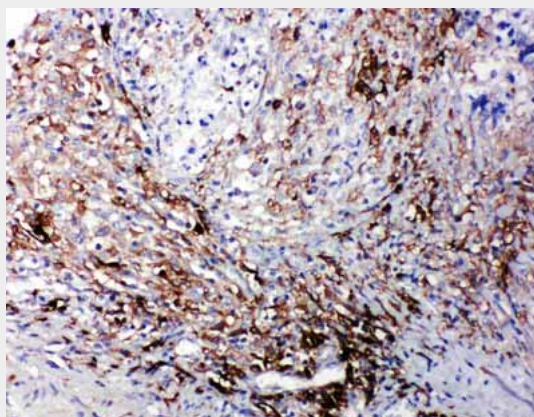
Cellular Location

Membrane; Single-pass type I membrane protein.

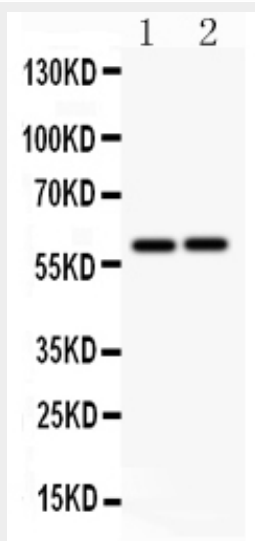
Anti-LTBR Antibody - Protocols

Provided below are standard protocols that you may find useful for product applications.

- [Western Blot](#)
- [Blocking Peptides](#)
- [Dot Blot](#)
- [Immunohistochemistry](#)
- [Immunofluorescence](#)
- [Immunoprecipitation](#)
- [Flow Cytometry](#)
- [Cell Culture](#)

Anti-LTBR Antibody - Images

Anti-LTBR antibody, ABO11276, IHC(P)IHC(P): Human Intestinal Cancer Tissue



Anti-LTBR antibody, ABO11276, Western blotting All lanes: Anti LTBR (ABO11276) at 0.5ug/ml
Lane 1: HELA Whole Cell Lysate at 40ug Lane 2: A549 Whole Cell Lysate at 40ug
Predicted bind size: 47KD
Observed bind size: 60KD

Anti-LTBR Antibody - Background

LTBR(Lymphotoxin B Receptor), also called TNFCR or LT-BETA-R, is a receptor for lymphotoxin which in humans is encoded by the LTBR gene. By linkage analysis with recombinant inbred mouse strains, Nakamura et al.(1995) demonstrated that the Tnfr locus is close to the Tnfr1 gene on mouse chromosome 6. Presumably, the human homolog is located on 12p13. Silva-Santos et al.(2005) reported that double-positive T cells regulate the differentiation of early thymocyte progenitors and gamma-delta cells by a mechanism dependent on the transcription factor ROR-gamma-t and the lymphotoxin-beta receptor. Lo et al.(2007) identified lymphotoxin and LIGHT(TNFSF14), tumor necrosis factor cytokine family members that are primarily expressed on lymphocytes, as critical regulators of key enzymes that control lipid metabolism.